

# ADS



## *Aberdeen and District Soarers*

Newsletter No 52

November 1993

98, Forest Park

Stonehaven

---

### MINUTE OF 1993 AGM

#### Agenda

1. Apologies
  2. Chairman's Report
  3. Treasurer's Report
  4. Election of committee members (Brian Ord retires, other members prepared to continue)
  5. Events for 1994
  6. Programme for indoor evenings
  7. Central phone-in - discussion/proposals
  8. Newsletter editorship
  9. A.O.C.B.
-

1. Apologies were received from Andy Thoires, Tom McPherson, Jim Anderson and Graham Donaldson.
2. The Chairman's report was read by Mike Pirie in Graham' absence (due to a bout of flu).

ADS membership is now a healthy 50 strong. Now in its 15th year with many new young members. In spite of the North East weather, Tuesday nights have been well attended at Calder Park, which has proved to be a popular venue. However, Graham pointed out that slope soaring was still very much an option.

The Hazlehead event was a great success this year and the venue has been confirmed for 1994.

The Calder Park BBQ was well attended, safety on the field was good and an enjoyable day was had by all.

Finally Graham extended members' thanks to Brian Ord, who retires this year as Competition Secretary, for his efforts over the last three years.

3. Mike Pirie distributed copies of the club accounts. Both the Bring and Buy and Hazlehead made profits and the club finances are in a healthy state. A copy of the accounts is detailed on page 4. It was decided that club fees remain at 1993 levels.
4. As already mentioned, Brian retires as Competition Secretary this year. Brian thanked the committee and club members, past and present for their assistance over the last three years.

Craig Scott assisted by Graham Philip, volunteered to take over as Newsletter editor from Graham Donaldson, allowing Graham to continue as a much appreciated Chairman (he was unable to carry out both functions)

Andy Thoires was nominated by Jim Masson and seconded by Brian Ord to take over the role of Competition Secretary. There being no other nomination, Andy was elected in his absence.

5. A provisional list of dates for 1994 is published later in the Newsletter. John Mcconville suggested that the Scottish Soaring Nats could be held at Hazlehead at some future date. The committee is to persue this possibility and seek council help.

6. Most indoor evening events were detailed in the newsletter. Mike suggested that the last two evenings could be used for showing model videos. It was suggested that the indoor competition venue be changed from Cammachmore to Muirfield. This was agreed.
7. Various ideas were suggested for this constant problem - an answering machine held by committee members in turn with the responsibility for the venue or regular fliers being contacted by telephone on an individual basis. The subject was left for the committee to discuss further.
8. Mentioned under election of members.
9. Graham Philip advise members that there is to be a talk by a Ripmax representative at Montrose Leisure Centre on the 26th November 1993. Details available from Graham.

Some frequency problems have been experienced at Calder Park. It was agreed that ADS will fly on even frequencies ONLY. The committee will formulate flying rules for Calder and ensure that a peg board is available at all times. John McConville suggested that every member make every effort to be in possession of more than one set of crystals. SAA rules advise adequate frequency spacing.

Jim Masson suggested that Brian Sharp be made an honorary ADS member. This was seconded by B. Ord and J. McConville.

John suggested that prizes for the Hazlehead event be improved. He suggested that the possibility of using the Golf Club to entertain visiting competitors be investigated.

Alan Stewart proposed that a check be made on the cover provided by the SAA insurance - the committee is to investigate details.

Norrie requested that the club purchase wood for the club glider project.

Tom presented the club with a very nice trophy donated by T.N.T. to be used for Tuesday night competition.

Finally, members suggested that some form of bridge be erected over the stream at the access to Calder Park from the carpark. It was felt that the council should be approached in the first instance. John Donald agreed to follow this up.

There being no further business, the meeting was closed.

## Treasurers Report

Accounts for the period 10/11/92 to 9/11/93

### Income

Dinner/Dance '92	400.97	
Fees - ADS	390.00	
Fees - SAA	490.00	
Bring and Buy	80.76	
Stickers/Badges	7.40	
Indoor Competition	12.00	
Hazlehead Fly-in	152.00	
Indoor Meets 1992/3	38.50	
Indoor Meets 1993/4	31.40	
Bank Interest	27.14	
Dinner /Dance 1993	490.80	
<hr/>		
Total	2120.97	2120.97

### Expenditure

Bank closing fee	10.00	
Dinner/Dance '92	429.66	
Fees - SAA	502.00	
Stationary/postage	105.86	
Sandwiches (AGM)	20.00	
Sandwiches (Bring & Buy)	54.00	
Sandwiches (Indoor Comp)	14.40	
Barbecue '93	48.78	
Prizes - Indoor Comp	3.60	
Trophies - Hazlehead	27.00	
Batteries/Parachute	63.64	
Muirfield School Fees	90.50	
Dinner/Dance '93	406.00	
<hr/>		
Total	1775.44	1775.44
<hr/>		
Profit for Year		345.53

### Club Funds

	10/11/92	10/11/93	
Treasurer's Account	727.25		
Cash	44.17		
Cash flow Account		1116.95	
<hr/>			
	771.42	1116.95	345.53

Mike Pirie - Treasurer

**1994 CALENDAR**

10th January	Hints and Tips - talk by Jim Anderson.	Muirfield
14th February	Indoor Competition	Muirfield
19th February	Slope Fly-in (SAA Awards)	TBA
1st March	Bring & Buy	Cammachmore
5th March	Alternative Slope Fly-in	TBA
14th March	Video Night	Muirfield
11th April	SAA Safety - talk by Andy Thoirs	Muirfield
28/29th April	Radioglide	England
7/8th May	Power Glider Event	Stonehaven
4/5th June	ADS Hazlehead Weekend	Hazlehead
11/12th June	Waterplane Event	Monekie
2/3rd July	Bon Accord	Hazlehead
23/24th July	Montrose Air Day	Montrose
30/31st July	Scottish Glider Nationals	Pitrevie?
21st August	ADS Barbecue	Calder Park
Sept.	Taylor Trophy	Huntly?
28th October	ADS Dinner/Dance	Cammachmore
8th November	ADS AGM	Cammachmore

In addition to the above, flying will take place every suitable weekend and Tuesday evenings once daylight returns. Phone any committee member - hopefully we'll know where if any flying is taking place. At least we'll make an intelligent (??) guess.

---

**YOUR 1994 COMMITTEE**

Chairman	Graham Donaldson	0224 486961
Treasurer	Mike Pirie	0224 323640
Secretary	Gerry Mitchell	0224 324828
Social Secretary	Bill Sherriffs	0651 862590
Competition Secretary	Andy Thoirs	0224 712008

## 1994 Club Fees

It has been decided to keep our Club fee at £8.00 again this year. We assume that there will be no increase in the SAA fee of £12.00, making a total of £20.00 or £8.00 for those under 16yrs at 1st January. Remember that your insurance runs from 1st January to 31st December. Fees together with your 1994 application/renewal form and cheque should be in Mike's hand before the end of the year to ensure insurance continuity.

Once again the club will carry any addition to the SAA fee should it be levied, for those of you paying by 31st December. So pay up *now*.

---

## Club Sports Wear

I have arranged to have Sweat shirts, Polo shirts, Tee shirts and Baseball caps embroidered with the club logo on the left hand side of the garment.

**Sweatshirts** are 7oz. Poly/Cotton raglan sleeve crew neck available in the following sizes :-

Small, Medium, Large, Extra Large, XXL.

**Polo Shirts** are Poly/Cotton with a knitted collar

Small, Medium, Large and XL.

**Tee Shirts** in heavyweight (USA) premium 100% Cotton.

Small, Medium, Large, XL.

**Baseball caps** 100% cotton adjustable back strap.

All the above garments will be Sky Blue in colour with the ADS emblem in Black embroidery.

Sweat Shirts	£11.00
Polo Shirts	£11.50
Tee Shirts	£7.50
Baseball Caps	£6.50

To place an order please contact Bill Sherriffs on 0651 862590 (cash with order please)

---

## HINTS and TIPS

### 1. Hanger Rash Cure

No matter which model I'm building, no matter how hard I try, there are always little (and not so little) dings and dents scattered around the surface of the finished balsa, due to tools (usually carelessness on my part) and other hard objects lying around my building board.

The following may be 'old hat' to some, but I was most surprised that no one else knew of my 'sure fire cure' for taking dings out of balsa wood. Take an iron (the bigger and hotter the better - I usually find that my wife's clothes iron is better for larger dings, although the small modelling one will do at a pinch) and make sure its at full heat. Take a cloth, saturated with water, and liberally dab the ding with water. When the balsa is well saturated, apply the iron to the wetted area.

With a great deal of spluttering and fizzing, the hole will push itself back towards the surface of the balsa. If the hole is shallow, it becomes unnoticeable. If deeper, a couple of applications may be necessary. When the surface has dried out, a light sanding has it ready for finishing.

### 2. Sanding Table

The sketches overleaf show a table which I have made up from blockboard (ply if preferred) which provides a very substantial sanding table in conjunction with an electric drill fitted to a horizontal drill stand and with an aluminium sanding disc. It will very accurately sand anything from balsa wood to even soft aluminium. If a larger disc can be obtained, so much the better. One point of caution - with smaller pieces, always sand on the portion of the disc travelling **down** towards the table - otherwise the piece could be thrown into the air.

Also shown is the added luxury of a protractor table - useful for offering pieces at a constant angle to the disc. Simply clamp or hold the swinging arm against an appropriate protractor line and offer the wood to be sanded.

Jim Anderson

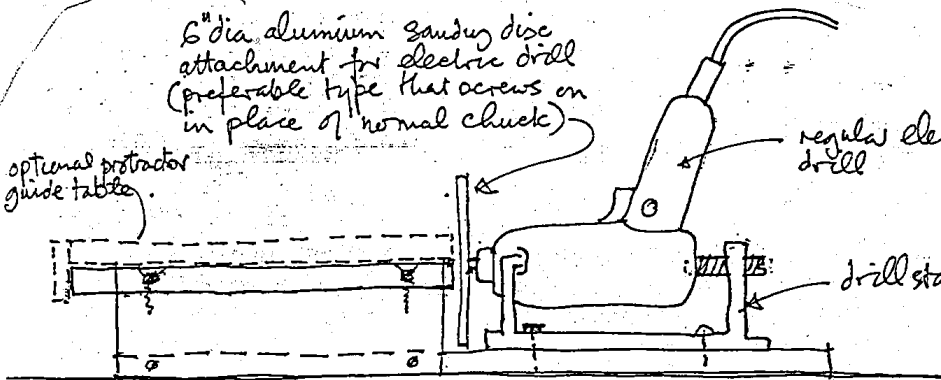
---

6" dia aluminum sanding disc attachment for electric drill (preferable type that screws on in place of normal chuck)

optional protractor guide table.

regular electric drill

drill stand

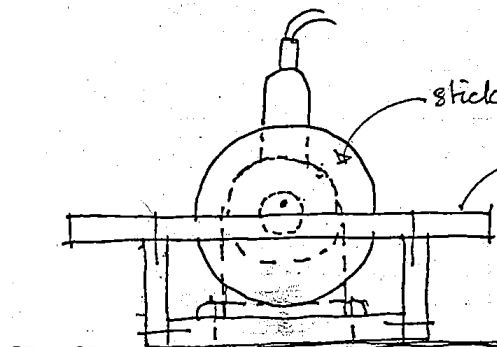


SIDE ELEVATION

stick on sandpapers.

table approx 12" sq

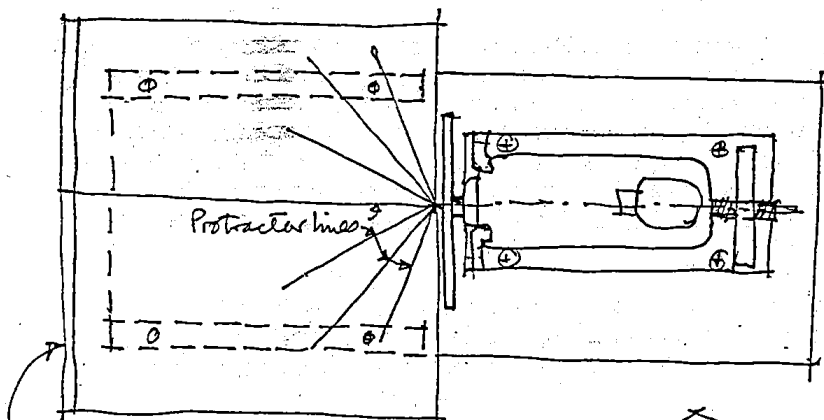
Materials 5/8" / 3/4" thick Blockboard or Plywood for all components.



FRONT ELEVATION

Protractor lines

PLAN



end of table to be parallel to disc with lipped edge for optional table top.

Protractor lines

1/2" x 3/4" pine swinging arm

1/2" x 1/4" lipping to edge

OPTIONAL PROTRACTOR GUIDE - sits on top of sanding table.

